

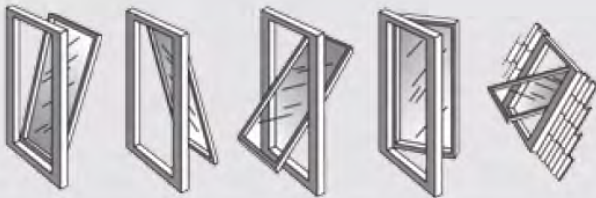
SECO 35



Stroke 280 / 380 mm

CHAIN DRIVE ACTUATOR 230V ac 350N

Applications



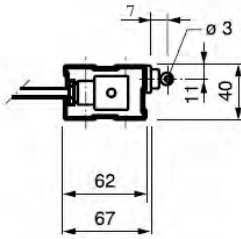
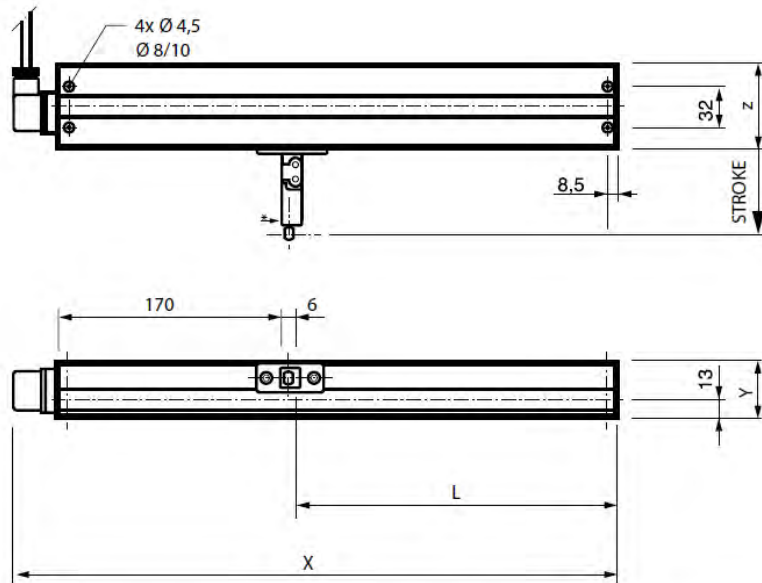
Features:

A compact cost effective chain actuator mainly used for natural ventilation window applications. Smaller sloping vents can be operated due to the double strength chain.

Flexible fixing through the body or face fixing brackets.



Stroke	L	X	Y	Z
280mm	177.5mm	410mm	40mm	62mm
380mm	177.5mm	460mm	40mm	62mm



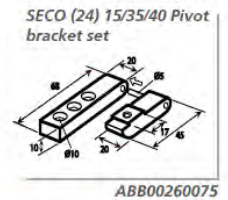
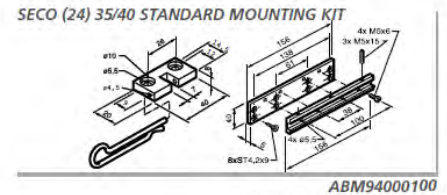
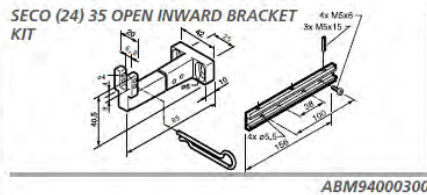
230V ac
350N

The AutoCAD drawing for this product can be found at www.secontrols.com

Technical Data

Connections

ACTUATOR	SECO 35
TYPE	MOTORISED
ACTUATOR TYPE	CHAIN OPENING
VOLTAGE (all +/-6%)	230V ac
AMP DRAW CURRENT (no load)	0.45A
AMP DRAW CURRENT (with load)	0.45A
CONSUMPTION (without load)	110W
CONSUMPTION (with load)	110W
STROKE	280 / 380 mm
OPERATING TIME	15mm/s
AMBIENT OPERATING TEMP.	-10°C +50°C
THRUST FORCE	350N
CLOSE FORCE	350N
SOFT CLOSE	N/A
SWITCHING	Electronic limit and physical limit
TYPE OF SWITCH	REED
STANDARD FINISH	Silver Anodised
COLOUR OPTION	Powder coated
POWER OUT FIXING	NO
WINDOW MIN HEIGHT	900mm
FLEX LENGTH	1000mm
FLEX TYPE	4 core/ 0.75mm PVC black
INSULATION CLASS	F
PROTECTION DEGREE	IP22
PRODUCT LIFE	10,000 STROKES (each direction)
WEIGHT	1.70Kg/1.186Kg
FACE FIX	Standard
THROUGH BODY FIX	YES
PIVOT BRACKET	YES (specify)
U BRACKET	N/A
OPEN IN	YES
USAGE	NATURAL



Designed for windows/vents down to a minimum height of 900mm. Pivot brackets are available for windows/vents below 900mm.

These actuators require operation from a 230V ac control unit.

Recommended Control:

Contact an SE Controls sales representative for recommendations.

Product	Operating voltage	Force	Product code	Stroke
Chain Actuator	230V ac	350N	DAM0350280S	280mm
	230V ac	350N	DAM0350380S	380mm



Voltage to 230V chain actuators must be switched off after each operation with a rest period required between cycles.