



**Robertson**  
Ventilation Industries

*COMPANY PROFILE*

*P. O. Box 296  
Modderfontein  
1645  
South Africa*

*Tel: +2711 608 4640  
Fax: +2711 608 5643*



*Email: [info@robventind.co.za](mailto:info@robventind.co.za)  
Website: [www.robventind.co.za](http://www.robventind.co.za)*

# *INDEX*

---

<b>SECTION 1:</b>	Company Profile
<b>SECTION 2:</b>	Structure of Organisation
<b>SECTION 3:</b>	Management, Technical & Professional Staff
<b>SECTION 4:</b>	Plant & Equipment Resources
<b>SECTION 6:</b>	Official Licenses
<b>SECTION 7:</b>	Quality Policy
<b>SECTION 8:</b>	Robertson Ventilation Industries: Projects – Completed and Current
<b>SECTION 9:</b>	Bank References
<b>SECTION 10:</b>	Product Literature

*COMPANY PROFILE*



### Smoke & Fire Ventilation Exhaust & Inlet Ventilators.

RVI - ARV  
RVI - EuroCO  
RVI - MDAV/MBAV (Powered Smoke Extraction Units)

### Mechanical Ventilation System's & Fan Units.

Whilst gravity ventilation systems can be cost effectively and successfully applied to the majority of industrial and a significant number of commercial applications there are, under certain conditions, occasions where mechanical ventilation is required. Robertson Ventilation Industries through their extensive range of aligned suppliers is able to design, manufacture, supply, install, commission and guarantee complete mechanical ventilation systems. Please contact your RVI Service Centre to obtain the assistance you require.

### Acoustic Louvres.

Series 7000 Single & Double Bank Box Louvres  
Series 7000 Continuous Acoustic Louvres

### Architectural Louvre Systems.

Inlet Systems  
Breezewall  
Fixed blade louvres  
Vertical louvres  
Horizontal louvres  
Triple pass louvres  
Internal shading systems

Whilst our proven 'standard' ventilation products and system give us the power to predict the performance of every Robertson designed and built gravity ventilation system long before they reach the roof; Robertson Ventilation Industries has the in house ability to design, engineer, fabricate, install, commission and guarantee application specific custom ventilation systems for any building application or process.

### Single Responsibility Service

Robertson Ventilation Industries unique project specific approach and service brings architectural and industrial components together as required to meet client requirements.

All ventilation products and systems are developed and guaranteed to the highest technical standards. By drawing products from established producers in fields aligned to our own, we are able to provide a complete service meeting our client's overall need for a complete ventilation system design, construction, installation and performance guarantee.

## *Architectural Solutions*

### **Architectural Solutions (External) Systems**

Architectural Solutions , a division of Robertson Ventilation Industries (Pty) Ltd holds a technology, manufacturing and distribution agreement with one of the largest international Ventilation and Solar Shading groups – Colt International.

Through its associations with Colt International and Robertson Ventilation Industries (Pty) Ltd Solar Shading Industries is able to bring to the South African market the benefits of Colts 80 years' experience and knowledge in the design and supply of Architectural Solutions and RVI's 50 years contracting experience in Southern Africa.

In the same way that RVI manufactures smoke and fire ventilation systems and projects in South Africa under license to Colt International; SSI manufactures architectural external louvres and sun shading systems and products under license to Colt International.

Architectural Solutions Division is able to offer a full design, manufacture, supply and installation service as well as commissioning of electrically driven louvre systems and ongoing system maintenance after installation.

All Architectural Solutions extrusion dies are held at Wispeco and as such the bulk of our extrusions are produced locally. In some very special applications we have imported blades as the particular building demanded a specific architectural feature or as a result of the sun study carried out, that could not be met with our SA range of extrusions. This further enhances our scope of supply tremendously to accommodate most, if not all instances.

Please visit our website: [www.robventind.co.za](http://www.robventind.co.za) for additional updated information and brochures.

### **Architectural Solutions (Internal) Systems**

During the course of last year RVI recognised that there is a growing requirement in the South African market for internal, fully controllable, sun shading and daylight harvesting systems.

Robertson Ventilation Industries (Pty) Ltd is now also an authorised distributor for Warema International GmbH products and systems.

RVI is responsible for the promotion, distribution, installation and after sales service for the full WAREMA product range throughout South Africa.

Through our external sun shading design partners Colt International in Europe, we were introduced to a company called 'Warema International GmbH' which is based in Germany.

Warema International GmbH offers a full range of internal shading devices and systems. Warema International GmbH is the largest single source supplier of internal shading devices and system worldwide. Warema manufactures and designs its own control systems and as such is able to provide a turnkey solution from design to installation, commissioning and maintenance.

RVI has been authorised by Warema to promote, distribute, install, commission and provide after sales service for the full range of Warema products here in South Africa. Warema provides technical support, staff training as well as project specific application engineering. Feel free to visit the Website: [www.warema.com](http://www.warema.com) for additional information.

## SE CONTROLS

RVI (Robertson Ventilation Industries) and SE Controls and have signed an agreement for the distribution license of SE Control products in South Africa.

RVI is the sole South African agent licensed for the distribution of all SE Controls products and systems; this allows RVI to provide South Africa with natural ventilation and smoke control products with a full time project management, maintenance staff and support services for Johannesburg, KwaZulu Natal and the Cape regions.

SE Controls incorporates natural ventilation to suite your building's needs, the method of window automation along with a master control panel is all that is required. Basic methods of thermostats in the interior and exterior of the building, rain sensors, wind pressure and directional sensors, CO2 sensors, humidity sensors becomes the make-up of the building to make the building breath.

SE Controls smoke and fire detection system works with a link through the main DB board and the (BMS) Building Management System as well as 24D/C battery backup for when power has been lost, all the windows actuators in the smoke control range are fire rated and all cabling silicone to with - stand high temperatures. When the fire alarm has been triggered all the windows will open to a full open stance, when the management or fire personal have reset the link buy the fireman's override switch all windows will go back to the parameters set.

### Our range of products and systems consists:

230v Chain & linear Actuators

24v D/C Chain & Linear Actuators

230v – 24v D/C Control Panels

Rain & Wind Sensors

Thermostats, CO2 and Humidity Sensors

*STRUCTURE  
OF  
ORGANISATION*

*Structure of Organisation*

---

**The Firm** : Robertson Ventilation Industries (Pty) Ltd  
("RVI")

**Business Address** : P. O. Box 296  
Modderfontein, 1645  
South Africa

**Telephone No.** : +27 11 608 4640

**Fax No.** : +27 11 608 4643

**Email** : info@robventind.co.za

**Website** : [www.robventind.co.za](http://www.robventind.co.za)

**Year of Establishment** : 1958

**Persons Empowered to Act  
for the Company** : Mr. E. O. Whelan

**Name of Bankers** : Standard Bank of South Africa

**Auditors** : HBLT Chartered Accountants & Auditors

**No. of Employees Salary** : #42.

**No. of Employees Hourly** : #120.



*MANAGEMENT  
TECHNICAL  
&  
PROFESSIONAL STAFF*

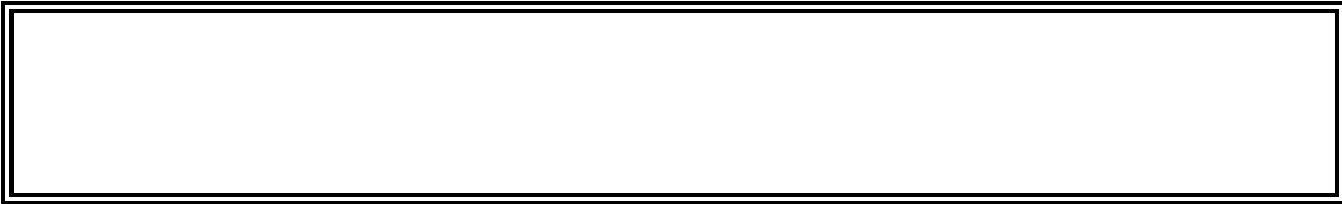
*Management, Technical & Professional Staff*

---

<b>No.</b>	<b>Designation</b>	<b>No. of Persons</b>
------------	--------------------	-----------------------

<b>1</b>	Managing / Commercial Director	<b>01</b>
<b>2</b>	Technical Director	<b>01</b>
<b>3</b>	Marketing Director	<b>01</b>
<b>4</b>	Contracts Director	<b>01</b>
<b>5</b>	Manufacturing Manager	<b>01</b>
<b>6</b>	Financial Accountant	<b>01</b>
<b>7</b>	Sales Representatives	<b>06</b>
<b>8</b>	Contract Managers	<b>04</b>
<b>9</b>	Contract Administrators	<b>02</b>
<b>10</b>	Site Administrator	<b>01</b>
<b>11</b>	Site Manager	<b>03</b>
<b>12</b>	Site Foreman	<b>03</b>
<b>13</b>	Safety Representative	<b>01</b>
<b>14</b>	Auto cad operators	<b>04</b>
<b>15</b>	Admin staff	<b>05</b>
<b>16</b>	Workshop Manager	<b>02</b>
<b>17</b>	QA / QC Manager	<b>01</b>
<b>18</b>	Human Resource Manager	<b>01</b>
<b>19</b>	Control Panel Manager	<b>01</b>
<b>20</b>	Maintenance Manager	<b>03</b>

A labour force of 120 artisans, semi skilled and labourers are currently employed by the company on various projects. This can be increased as and when required.



*PLANT  
&  
EQUIPMENT RESOURCES*

*Plant & Equipment Resources*

---

No.	Machine Name	Quantity	Capacity
1	Light delivery vehicles	10	
2	Medium delivery vehicles	1	
3	2 Ton Trailers	2	
4	25 kW Ford tractor	1	
5	5 KVA generators	12	
6	110CFM compressors	2	
7	18 Stage mobile roll former	1	
8	20 Stage Box rib roll former	1	
9	Cranking machine	1	
<b>Drawing Office &amp; Engineering</b>			
10	Auto Cad stations	5	
11	HP Plotters	2	
12	HP Laser Printer	3	

Robertson Ventilation Industries has its own sheet metal and light steelwork manufacturing facility that is equipped with:

- 2 - CNC 22 stage turret punch,
- 1 – Cut to length line,
- 1 – 6m Press brake,
- 2 – 3m Press brakes,
- 3 – 3m Hand folder box and pan,
- 2 – Eccentric press,
- 2 – Tik welding machines,
- 2 – Guillotine,
- 2 – Pitts lock seamers.
- 1 – Lock former
- 1 – 3 ton forklift



*OFFICIAL  
LICENSES*

*Official Licenses*

---

Robertson Ventilation has been trading in South Africa for the past 48 years as an independent subsidiary within a number of holding companies. Within the latest holding company Robertson Ventilation was a division of the cladding company Steeledale Cladding; Steeledale Cladding being part of the mechanical and electrical division of Grinaker/LTA Limited.

As a result of a rationalisation to core business within Grinaker/LTA an opportunity existed for the management of Robertson Ventilation to take over the ownership and control of the ventilation division. The ventilation division of Grinaker/LTA, i.e. Robertson Ventilation International - South Africa was therefore registered as a privately owned company named Robertson Ventilation Industries (Pty) Ltd. This change in ownership occurred in March / April 2005.

The registration of Robertson Ventilation Industries (Pty) Ltd ensures that we are able to focus on offering and providing to our customers solution based service and support in the industrial ventilation, fire and smoke ventilation and associated product markets.

Following the agreement and signing of a manufacturing and distribution license agreement between Robertson Ventilation Industries (RVI) and Colt International in October 2006; RVI is the sole South African agent licensed for the manufacture and distribution of Colt products and systems.

This license agreement enables RVI to provide the South African market with the latest European design approaches and locally manufactured for smoke ventilation systems and architectural solar shading systems.

Through its associations with Colt International and Robertson Ventilation Industries (Pty) Ltd Solar Shading Industries is able to bring to the South African market the benefits of Colts 75 years' experience and knowledge in the design and supply of Solar Shading Systems and RVI's 50 years contracting experience in Southern Africa.

Robertson Ventilation Industries (Pty) Ltd has a sister company Robertson Ventilation Industries – KZN (Pty) Ltd in KwaZulu Natal and an office in the Western Cape.



*QUALITY  
POLICY*

*Quality Policy*

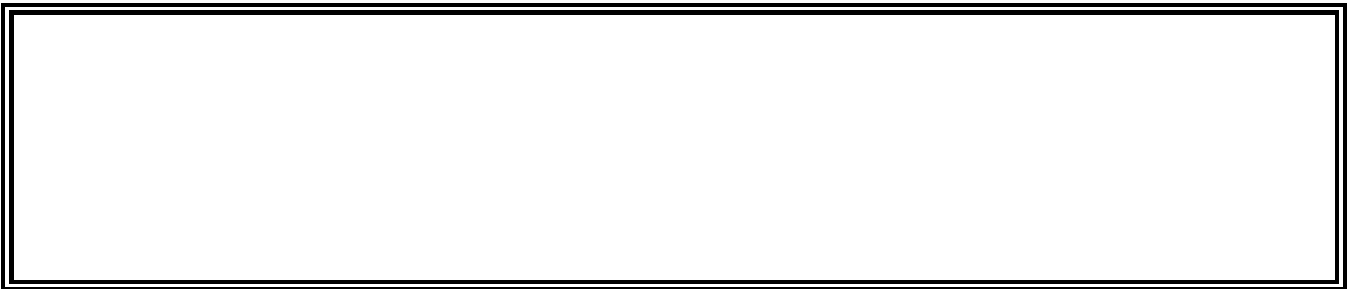
---

Robertson Ventilation Industries is committed to the delivery of quality products and services in full compliance with its contractual requirements.

Robertson Ventilation Industries is committed to the continual improvement of its products, processes and systems and services to ensure “Right First Time” delivery.

Robertson Ventilation Industries is in the process of adopting the international ISO 9001 Standard as its standard for quality management.

Robertson Ventilation Industries encourages all employees to participate in achieving its stated quality objectives.



*ROBERTSON  
VENTILATION INDUSTRIES  
ARCHITECTURAL SOLUTIONS  
&  
SE CONTROLS  
  
PROJECTS*

*Robertson Ventilation Industries, Architectural Solutions  
& SE Controls Projects Completed & In Progress*

---

<b>No.</b>	<b>Project</b>	<b>Product / System</b>	<b>Consultant / Client</b>
1	DC6 Steam Extraction System	Customised stainless steel ducting	Aluminium Bahrain

		and centrifugal fan system	
2	Aluminium Bahrain - Line 5 Expansion; Potrooms 9 & 10	Assembly & Installation of Low Profile Roof Ventilators and cladding	Bechtel / Zamil Steel
3	Aluminium Bahrain - Line 5 Expansion; Anode Bake Furnace Building	Design, Manufacture, Supply & Installation of SF1000 Low Profile Roof Ventilators and cladding	Bechtel / Arabian International Company
4	Aluminium Bahrain - Line 5 Expansion; Anode Bake Furnace Building	Manufacture, Supply and Installation of Type 3300 Industrial Operating Louvres and cladding	Bechtel / Arabian International Company
5	Aluminium Bahrain - Line 5 Expansion; Anode Rodding Shop & Rodded Anode Butts Storage	Design, Manufacture, Supply & Installation of 68 no. vertical discharge powered extraction units.	Bechtel / MCSC
6	Aluminium Bahrain - Line 5 Expansion; Casthouse 3	Design, Manufacture, Supply & Installation of SF1000 Low Profile Roof Ventilators and cladding	Bechtel / Arabian International Company
7	Aluminium Bahrain – Line 5 Expansion; Casthouse 2	Assembly & Installation of Low Profile Roof Ventilators	Bechtel / Arabian International Company
8	Hypermarket Shopping Centre.	Supply of RVI-Estra Replacement air louvres in custom built door frames	A.D.M.I.C. Lebanon
9	LNG Plant, Trane 4, 5 & 6, Nigeria	Design, manufacture & supply of Continuous Series 7000 Acoustic Louvres	Kellogg's Brown & Root / Weatherwise
10	6000MW Power Station – Tutuka, South Africa	Design, Manufacture & Installation of RVI-Ultra flow & Weather proof louvre systems and cladding	Eskom
11	6000MW Power Station – Kendall, South Africa	Design, Manufacture & Installation of RVI-Ultra flow & Weather proof louvre systems.	Eskom
12	4000MW Power Station – Hendrinia, South Africa	Design, Manufacture & Installation of RVI-Ultra flow & Weather proof louvre systems.	Eskom
13	6000MW Power Station – Majuba, South Africa	Design, Manufacture & Installation of RVI-Ultra flow & Weather proof louvre systems and cladding	Eskom
14	4000MW Power Station – Kriel, South Africa	Design, Manufacture & Installation of RVI-Ultra flow & Weather proof louvre systems and cladding	Eskom
15	Nuclear Power Station, Koeberg - Cape Town	Design, Manufacture & Installation of Box acoustic louvres	Eskom
16	W2, 3 & 4 Glass Furnaces - Wadeville	Design, Manufacture, Supply & Installation of SF1000 Low Profile Roof Ventilators and cladding	Consol Glass

No.	Project	Product / System	Consultant / Client
17	Bottling Plant - Angola	Design, Manufacture, Supply & Installation of Stream-line Guided Flow Ridge Vents	Brown & Root / Coco Cola
18	Distribution Warehouse – Mauritius	Design, Manufacture, Supply & Installation of custom built powered ventilation extraction units	Mauritius Breweries
19	Platinum Smelter; Furnace Building - South Africa	Design, Manufacture, Supply & Installation of SF1000 Low Profile Roof Ventilators & Louvre Systems and cladding in stainless steel	Anglo Platinum Services

20	Platinum Smelter; ACP and Slow Cool Isle Furnace Buildings	Design, Manufacture, Supply & Installation of SF1000 Low Profile Roof Ventilators and stainless steel cladding	Anglo Platinum Services
21	Hillside Aluminium Smelter Potroom and Anode Bake Buildings – South Africa	Design, Manufacture, Supply & Installation of SF1000 Low Profile Roof Ventilators & Fixed continuous weather louvres	Alprom
22	Hillside Smelter - Anode Paste Plant – South Africa	Design, Manufacture, Supply & Installation of HVD Low Profile roof Ventilators and powered extraction ventilation units and cladding	FCB
23	Hillside Smelter - Bath Recycle Shop – South Africa	Design, manufacture & supply of continuous weather louvre systems and cladding	FCB
24	Hillside Smelter - Gas Treatment Buildings – South Africa	Design, manufacture, supply & Installation of HVD Low profile roof ventilators & continuous weather louvre system and cladding	Procedair
25	Solvent Extraction Plant	Design, manufacture, supply & Installation 1.2m throat width fire ventilation units	Bateman's Metal Ltd
26	Zircon Smelter and Associated Buildings – Zimbabwe	Design, manufacture, supply & Installation of RVI-Ultra flow & louvre systems.	Anglo American
27	Zircon Smelter Separation Buildings	Design, manufacture, supply & Installation of RVI-Ultra flow & louvre systems and cladding	Anglo American
28	Stainless Steel Plant, Furnace, Rolling Mill & Hot Strip Mill Buildings	Design, manufacture, supply & Installation of SF 1000 Low profile roof ventilators, acoustic louvres, continuous weather louvres & Streamline Guided Flow Ventilators	Anglo American / Columbus
29	No 4 Paper Pulp Plant – Durban; South Africa	Design, Manufacture, Supply & Installation of powered ventilation extraction units	Sappi Paper
30	Tissue Plant – Springs; South Africa	Design, Manufacture, Supply & Installation of Stream-line Guided Flow Ridge Vents	Sappi Paper
31	Tissue Plant – South Africa	Design, Manufacture, Supply & Installation of Slope Mounted Stream-line Guided Flow Ridge Vents	Nampak Paper

No.	Project	Product / System	Consultant / Client
32	Hulett Aluminium Hot Mill and Plate mill Buildings – South Africa	Design, manufacture, supply & Installation of curved low profile ventilators & weather louvre	BKS Engineers
33	Mwanza Breweries - Tanzania	Design, manufacture, supply & installation of Automatic Smoke and Fire Ventilation system.	Impregilo SpA
34	Mozal Aluminium Smelter Potrooms - Mozambique	Design, Manufacture, Supply & Installation of SF1000 Low Profile Roof Ventilators	SNC- Lavalin / Murray & Roberts

35	Mozal Aluminium Smelter Anode Bake Buildings - Mozambique	Design, Manufacture, Supply & Installation of SF1000 Low Profile Roof Ventilators & Louvre Systems	SNC – Lavalin / Murray & Roberts
36	Mozal Aluminium Smelter Paste Plant - Mozambique	Design, Manufacture, Supply & Installation of powered ventilation extraction units & continuous louvres and cladding	FCB
37	PM 3 & 4 Paper Pulp Building – South Africa	Design, Manufacture, Supply & Installation of powered ventilation extraction units	Mondi Paper
38	Iskendrum Power Station Boiler Houses - Turkey	Design, manufacture & supply of continuous weather louvre systems	Steinmuller Gm
39	Polokwana Smelter – South Africa	Design, Manufacture, Supply & Installation of SF1000 Low Profile Roof Ventilators and cladding	Anglo Platinum
40	Boyne Aluminium Smelter - Australia	Design, Manufacture, Supply & Installation of SF1000 Low Profile Roof Ventilators	Bechtel
41	Airside Expansion Johannesburg International airport – South Africa	Design, Manufacture, Supply & Installation of Vertical discharge roof mounted fire & Smoke extract units	Airports Company South Africa
42	Upgrade of Durban Airport Terminal – South Africa	Design, manufacture, supply & installation of Automatic Smoke and Fire Ventilation system.	Airports Company South Africa
43	South African Airways 747 Hangar – South Africa	Design, manufacture, supply & installation of Automatic Smoke and Fire Ventilation system.	Airports Company South Africa
44	Westgate Shopping Mall – Zimbabwe	Design, manufacture, supply & installation of Automatic Smoke and Fire Ventilation system and triangular fixed louvres	Arup
45	Balito Shopping Mall - South Africa	Design, manufacture, supply & installation of Automatic Smoke and Fire Ventilation system.	CBI / Durban
46	Richards Bay Shopping Mall – South Africa	Design, manufacture, supply & installation of Automatic Smoke and Fire Ventilation system.	Arup
47	Aquarium Project – Botswana	Design, manufacture, supply & installation of Type 3300 Industrial Operating Louvres	De Beers Projects
48	Sun City Superbowl – South Africa	Design, manufacture and install fans and ducting system	Richard Pearce & Associates
49	Waterfall Shopping centre - Rustenburg	Design, manufacture and install smoke and fire ventilation system	Richard Pearce & Associates
<b>No</b>	<b>Project</b>	<b>Product / System</b>	<b>Consultant / Client</b>
50	Bridgestone Crossfire Warehouse - Elandsfontein	Design, manufacture and install smoke and fire ventilation system	H Hamam
51	Ridge Shopping Mall - Midrand	Design, manufacture and install smoke and fire ventilation system	RVI
52	Continental Tyre – Port Elizabeth	Supply Smoke Ventilators	RVI
53	Sasol Secunda	Design, develop, manufacture and install Swada Louvres	Technip/ RVI
54	Diamond Pavilion Shopping Centre - Kimberly	Design, manufacture and install smoke and fire ventilation system	Specialised Fire Technology

55	Mr. Price – Alberton City	Design, manufacture and install powered ventilation smoke and fire system	Building Code Consultants
56	Kolonnade Shopping Centre Pretoria	Design, manufacture and install natural ventilation system	Specialised Fire Technology WBHO
57	Carlswald Lifestyle Centre Midrand	Design, manufacture and install smoke and fire ventilation system	LPA
58	Greenacres Shopping Centre Port Elizabeth	Design, manufacture and install smoke and fire powered ventilation	Building Code Consultants SBT Construction
59	High-bay Warehouse Sasolburg	Design, manufacture and supply smoke and fire pneumatic ventilators	Siemens/ Sasol / RVI
60	Midlands Mall Pietermaritzburg	Design, manufacture and supply smoke and fire ventilation system	Building Code Consultants
61	Waterfall Mall Phase 3 & 4	Design, manufacture and supply smoke and fire ventilation system	Richard Pearce and Partners
62	IMF Smelter	Design, manufacture and supply natural ventilation system	Pyromet
63	Greenstone Shopping Mall	Design, manufacture and supply smoke and fire ventilation system	Specialised Fire Technology
64	Liberty Life Regional Office	Design, manufacture and install smoke and fire powered ventilation	Bramley and Associates
65	Jabulani Shopping Mall	Design, manufacture and supply smoke and fire ventilation system	Specialised Fire Technology
66	Jet Store Durban	Design, manufacture and install	Building Code Consultants
67	Woolworth Distribution Centre	Design, manufacture and install smoke and fire ventilation	WBHO/ SFT
68	PnP Centre	Design, manufacture and supply smoke and fire ventilation system and continuous louvres	Building Code Consultants
69	Gateway Shopping Centre	Design, manufacture and install powered smoke and fire ventilation	Emzansi Engineers
70	Dubal Aluminium Smelter	Design, manufacture and supervise natural ventilation	SNC-Lavalin
71	Sasol Secunda	Design, manufacture and install continuous louvres	Technip / Murray & Roberts.
72	Pavilion Shopping Centre	Design, manufacture and install powered smoke and fire ventilation	ADX Projects
73	P D Naidoo Office Block	Design, manufacture and install fixed screen louvres and electrical operated Solarfin louvres	Boogertman Architects
74	Southdown College	Design, manufacture and supply extruded 425 louvres	Boogertman Architects

No	Project	Product / System	Consultant / Client
75	Bayside Mall	Design, manufacture and install electrically operated window	Solution Stations
76	House Mooikloof	Design, manufacture and install fixed screen louvres	Nico Ver Meulen Architects
77	News Café Rustenburg	Design, manufacture and install fixed screen louvres	VDM Architects
78	Spar Distribution Centre	Design, manufacture and install powered smoke and fire ventilation	Bramley & Associates
79	Sohar Aluminium	Supply of Management, Purpose	Bechtel / Mosaco

		made roof trolleys, Supervision and Labour	
80	House Senderwood	Design, manufacture and install fixed screen louvres and electrically operated louvres	Nico Ver Meulen Architects
81	Boardwalk Mall	Design, manufacture and install powered smoke and fire ventilation	Specialised Fire Technology
82	Eagle Ford Motor Company	Design, manufacture and install fixed screen louvres	ICM Architects
83	Victoria & Alfred Waterfront	Design, manufacture and install powered smoke and fire ventilation	Bramley & Associates
84	Aluar Aluminium Company	Design, manufacture, supply and supervision of Low Profile Ventilators and Louvres	ALUAR / RVI
85	Unilever	Design, manufacture and install powered smoke and fire ventilators and continuous louvres	WSP
86	Atterbury Value Mart	Design, manufacture and install acoustic louvres	T E Projects
87	Norwood Shopping Centre	Design, manufacture and install powered smoke and fire ventilation	Building Code Consultants
88	Qatalum Aluminium Smelter	Design, manufacture and install natural ventilation, inlet louvres and cladding for the contract	SNC Lavalin / RVI
89	Legacy Corner	Design, manufacture and install powered smoke and fire ventilation	Building Code Consultants
90	Eco Glades and Courts	Design, manufacture and install sun louvres	M&T Developments
91	Riverwalk office park	Design, manufacture and install sun louvres	Boogertman
92	Jubilee Mall Hummanskraal	Design, manufacture and install window smoke extraction	Specialised Fire Technology
93	Central Park – Glass Box	Design, manufacture and deliver chain actuators	L&D Enterprises
94	Bongani Hospital - Hazyview	Design, manufacture and install – chain actuators natural ventilation	N. Mikosi Engineers
95	Soweto UJ	Design, manufacture and install – actuators smoke extraction	P.D Naidoo & Associates
96	New PTA Engineering Block Uni	Design, manufacture and install – chain actuators natural ventilation	Spoormaker Engineers
97	Rustenburg Collage	Design, manufacture and install – chain actuators natural ventilation	Centurion Glass
98	Liberty Offices Swaziland	Design, manufacture and install – chain actuators smoke ventilation	Wills – Aereboe - Engineers





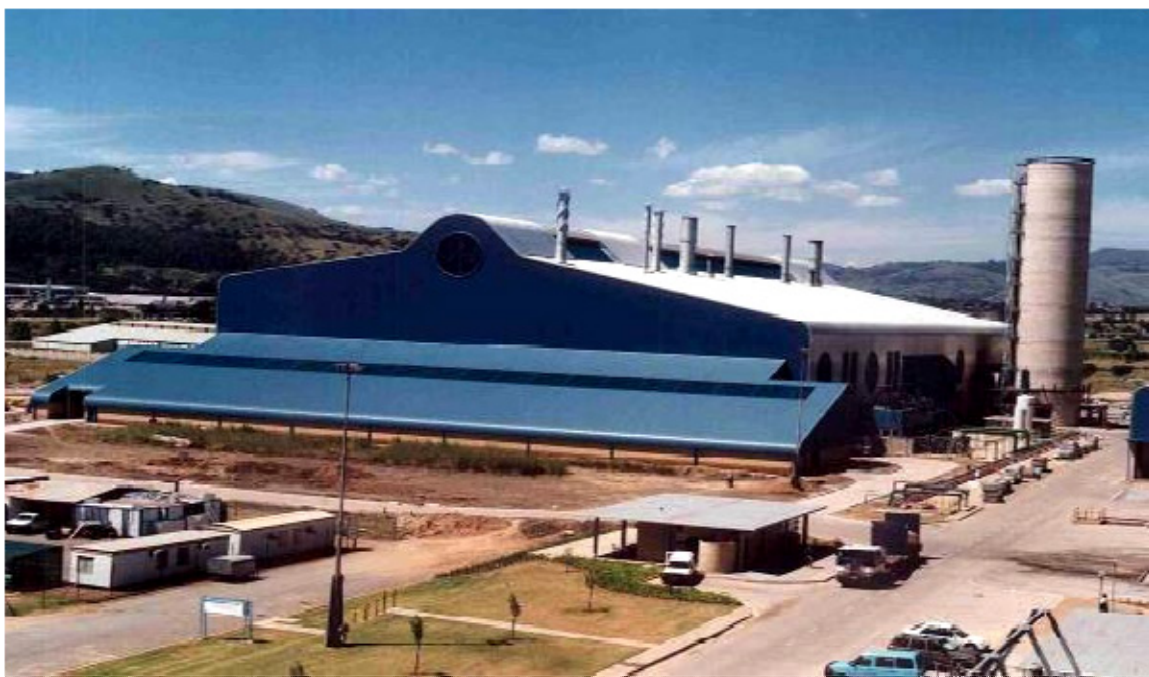


**Project: Design manufacture, Supply & Installation of SF 1000 Low Profile Roof Ventilators**  
**Location: Mozal Aluminium Smelter Mozambique**

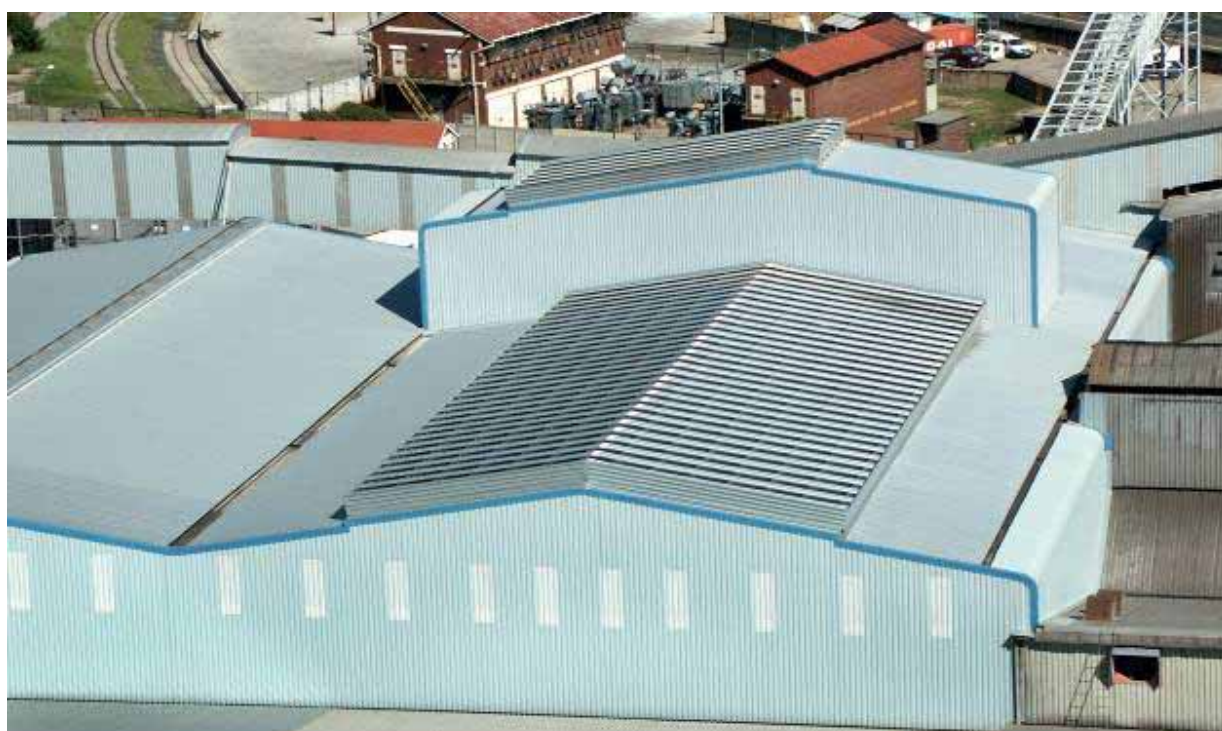




**Project: Custom Designed Roof Mounted Mechanical Ventilation Extract Units**  
**Location: Aluminium Bahrain**



**Project: Design, Supply & Installation of Curved HVD 470 roof ventilator**  
**Location: Hulamin Pietermaritzburg**



**Project: Design, Supply & Installation of SF1000 Low Profile Roof Ventilator system.**  
**Location: Consol Glass Wadeville**



**Project: Design, Supply & Delivery of 6000m<sup>2</sup> of Robertson Acoustic Louvres.**  
**Location: LNG Train 5 & 6 Nigeria**





**Project: Design, Supply, Delivery & Installation of 10 000m<sup>2</sup> of Robertson Continuous louvres**  
**Location: Mozal Aluminium smelter Mozambique**



**Project: Design, Supply, Delivery & Installation of 6 500m<sup>2</sup> of Robertson HLRD315 Continuous louvres**  
**Location: Sasol turbo Project Secunda**



**Project: Design, Supply, Delivery & Installation of 51 030 m<sup>2</sup> of Robertson SF 1000 Continuous Ventilator and 325 000 m<sup>2</sup> of A7 Wall and Roof Cladding**  
**Location: Oatalum - Qatar**



**Project: Design, Supply, Delivery & Installation of 51 030 m<sup>2</sup> of Robertson SF 1000 Continuous Ventilator and 325 000 m<sup>2</sup> of A7 Wall and Roof Cladding**  
**Location: Oatalum - Qatar**



**Project: Design, Supply, Delivery & Installation of Dual Purpose Mechanical Smoke Extraction and Day to day Ventilation System**  
**Location: Pick n Pay Distribution Centre, Gauteng**



**Project: Design, Supply, Delivery & Installation of Mechanical Smoke Extraction System**  
**Location: Meltz store Centurion**



**Project: Design, Supply, Delivery & Installation of 4800m<sup>2</sup> of Internationally Certified Fabric Smoke Curtains**

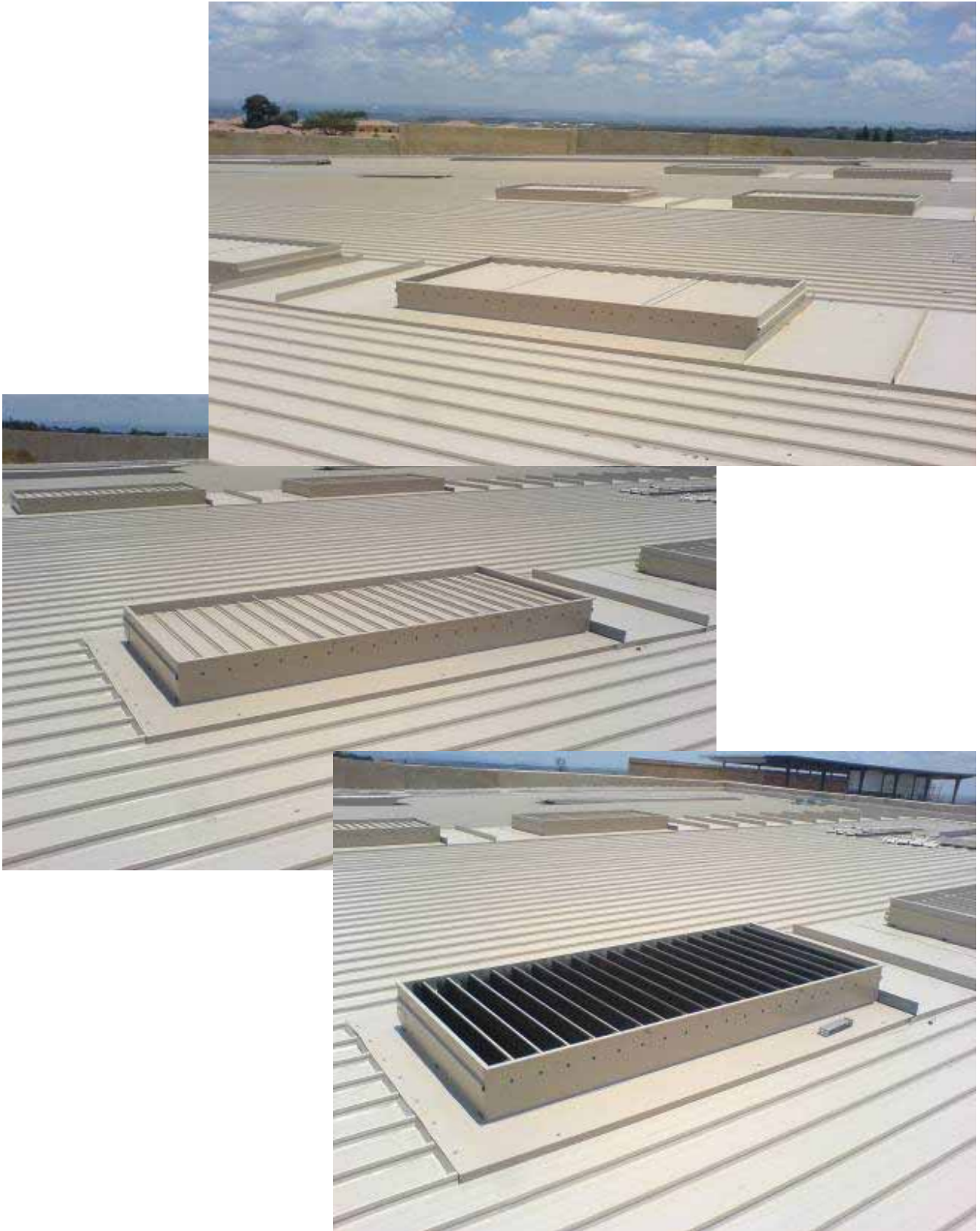
**Location: Pick n Pay Distribution Centre, Gauteng**



**Project: Design, Supply, Delivery & Installation of Electrically Operated Roof Ventilators**  
**Location: Middestad Mall**



**Project: Design, Supply, Delivery & Installation of Smoke Ventilation System Electric Control & Reticulation.**



**Project: Design, Supply, Delivery & Installation of Natural Smoke Ventilation System.**  
**Location: Carlswald Lifestyle Centre Midrand.**



**Bayside Mall**



## Case Study Department of Foreign Affairs, South Africa



**Name:**  
Department of Foreign Affairs,

**Location:**  
Pretoria, South Africa

**Products:**  

- Actuators and accessories  
72 No. TGLA 24V linear actuators:

- Control Systems  
36 No. OS2 Control Panels

- Sensors, switches and indication  
Bespoke remote indication repeater panel complete with manual / auto control switch as well as a Fireman's Override Switch. One (1) rain sensor.  
Set of High temperature silicone cabling reticulation installed in steel conduit and trunking.

### SE Controls creates a healthier and safer environment for the Department of Foreign Affairs building.

SE Controls have recently completed the installation and commissioning of a smoke and natural ventilation system at the Department of Foreign Affairs building in Pretoria, South Africa.

SE Controls worked in collaboration with Robertson Ventilation Industries to design and install the ventilation system at the new department.

The dual purpose ventilation system had to be designed to meet the stringent requirements of the projects smoke control needs whilst allowing proportional opening and control of the windows in accordance with the air-conditioning systems full fresh air cycle and high level exhaust requirements.

The windows were designed, manufactured and installed by Pre Plan International. In order to ensure that the window actuators provide reliable operation for the life of the building the actuators and windows were cycle tested prior to installation.

The dual purpose system was designed so that on activation of a fire signal from the buildings smoke detection system all 36 of the windows would open automatically over-riding any of the day to day demands such as the rain sensor.

The proportional control for the day to day ventilation is provided by means of a 0-10V control signal from the buildings BMS system (Building Management System) and allows for the windows to be opened in 10% increments. A rain sensor ensured that during incremental weather that the windows close and re-open once rain has stopped.

# Project Profile



## New Bangkok International Airport

SE Controls, the UK's leading expert in control systems for smoke and natural ventilation have successfully completed the installation of their new MC2 smoke ventilation system at the New Bangkok International Airport passenger terminal in Thailand.

Designed by the MJTA group of consultants, the New International Airport replaces the existing and overloaded Don Muang facility. Its new passenger terminal complex covers an area of over 500,000m<sup>2</sup> comprising seven floors and a basement, making it the largest structure of its kind in the world.

SE Controls' MC2 system provided control to 48 automatic opening vents fitted with their proven SECO 24 40 chain actuator. These vents located around the Airport's perimeter, were controlled by a series of modular control panels featuring the new MC2 range of controllers. These control panels, designed to comply with prEN12101-9 & 10, contain fully monitored battery backed secondary power supplies to ensure full operation in the case of mains power failure. Fully integrated with the Airport's building management system, the control panels provide constant status communication – a strict requirement laid down by the client.

**Client:** NSIA

**Architect:** MJTA group of consultants

**Consultant:** PME

**System:** Smoke Ventilation



### SE Controls

Lancaster House  
Wellington Crescent  
Fradley Park  
Lichfield  
Staffordshire WS13 8RZ

Tel: +44 (0)1543 443060  
Fax: +44 (0)1543 443070

Email: [sales@secontrols.com](mailto:sales@secontrols.com)  
Visit us at: [www.secontrols.com](http://www.secontrols.com)

Case Study

# The National Trust Central Office



**Name:**  
Heels, The National Trust Central Office

**Location:**  
Swindon

**Title:**  
Providing a highly sustainable ventilation strategy, one that maintains a comfortable internal temperature for the National Trust's 430 staff, cuts CO<sub>2</sub> emissions and keeps running costs to a minimum.

**Challenge:**  
To design, manufacture and commission a natural ventilation system for what is probably the most sustainable, low energy office development in the UK.

**Products:**  

- OSO control system
- 307 actuators installed on 213 windows
- 156 actuators installed on 78 roof vents

**Benefits:**  
Running costs to be reduced by £550,000 a year, with further savings of over £650,000 expected thanks to improved internal working practices and London weighting payments.

The building itself is expected to generate only 21kg of CO<sub>2</sub> per square metre annually, compared to 169kg for a typical air conditioned office. It has also won a number of industry accolades as a result, including a prestigious RIBA Sustainability Award.

**“SE Controls was chosen because of the transparency of their design and the system’s ability to work and communicate easily with the BMS.”**

Guy Nevill  
Max Fordham LLP

The National Trust, as a charity, works to preserve and protect the coastline, countryside and buildings of England, Wales and Northern Ireland.

It currently opens to the public over 300 historic houses and gardens, and 49 industrial monuments and mills – as well as preserving a vast number of forests, woods, fens, beaches, farmland, downs, moorland, islands,

archaeological remains, castles, nature reserves and villages.

The Trust invests over £160 million a year into the nation’s environmental infrastructure and works with over 40,000 companies, including 2,000 specialist conservation businesses.

For an organisation so dedicated to the ecological challenges of our time, it was imperative that The Trust’s new

## ARCHITECTURAL SOLUTIONS



**Project: Design, Supply, Delivery & Installation of Automated Solarfin Shading System.**  
**Location: PD Naidoo Consultants Head Office, Houghton**



**Project: Design, Supply, Delivery & Installation of Solar C Shading System.**  
**Location: Private Residence, Mooikloof**



**Project: Design, Supply, Delivery & Installation of Multiple Fixed Systems of Solar C130 and C100 Screens and CPL 400/80 Perforated (Centre) Screen**



**Project: Upgrade, Maintenance & Refurbishment of Existing Automated Colt Solarfin & Solar C Shading System - Location: Bafokeng Municipality Head Office.**



**Project: Design, Supply, Delivery & Installation of Sigma Screening Louvre System. Location: Rustenburg.**



**Project: Upgrade, Maintenance & Refurbishment of Existing Colt Solarfin Shading System.**  
**Location: Discovery Health Head Office, Sandton.**



**Project: Design, Supply, Delivery & Installation of Colt Solar C Series Screening Louvre System - Location: Legacy Corner, Sandton**



**Project: Design, Supply, Delivery & Installation of Colt Solar C Series Screening Louvre System**

**Location: Cosmos City Recreational, Library & Training Centre – Randburg**



**Project: Design, Supply, Delivery & Installation of Colt Solarfin CPL 600/80 Perforated Vertical Fixed - Louvre System**

**Location: Riverwalk Office Development, Garsfontein - Pretoria**



**Project: Design, Supply, Delivery & Installation of Colt Solarfin CPL 400/80 Perforated Vertical Automated Louvre System and Colt C100 Brise Soleil Sun Screens**

**Location: Riverwalk Office Development, Garsfontein - Pretoria**